

FibeAir[®] 4800

Fast Ethernet & nxE1/T1 License Exempt Radio



FibeAir 4800 family is Ceragon's sub-6GHz unique offering. It offers an extremely robust combination of E1s/T1s & Ethernet, carrier-class solution for the unlicensed bands.

- High data rate up to 48 Mbps
- Frequency bands 2.3GHz - 6GHz
- 5 MHz, 10 MHz and 20 MHz channel BW support
- Fast Ethernet and nxE1/T1 interfaces
- Operational range of up to 80 km (50 miles)
- Dynamic frequency scanning and transmit power control
- Adaptive modulation
- Supporting multiple point to point, up to 16 co-located units

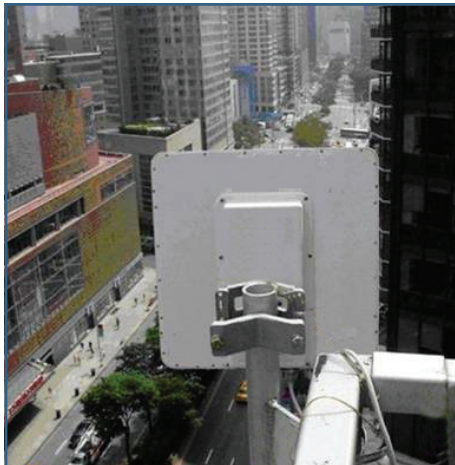
FOR PRICING CONTACT:
MapleNet
WIRELESS

877-MAPLE-01
sales@maplenetwireless.com
www.maplenetwireless.com

 CERAGON

"Best Value Added Reseller"
2007 & 2008 Award Winner

Fast Ethernet & nxE1/T1 License Exempt Radio



Introducing FibeAir® 4800

FibeAir 4800 product family is a carrier-class, low cost point-to-point wireless broadband system. It operates in the license-exempt 2.3 - 6 GHz bands and is suitable for service providers and enterprises that require immediate deployment and quick return on investment.

FibeAir 4800 product family carries Fast Ethernet and TDM services over sub 6GHz bands, effectively connecting voice and data over a single link. The system ensures low BER, as well as low latency and full compliance with E1/T1 interface jitter and wander requirements.

FibeAir 4800 enables direct connection of existing equipment, such as LANs and PBX systems, thus eliminating the need for additional external equipment.

System Overview

FibeAir 4800 product family is a carrier-class, highcapacity, low cost point-to-point wireless broadband system. It operates in the license-exempt 2.3 - 5.x GHz bands and is suitable for service providers and enterprises that require immediate deployment and quick return on investment.

FibeAir 4800 product family carries Fast Ethernet and TDM services over sub 6GHz bands, effectively connecting voice and data over a single link.

The system ensures low BER, as well as low latency and full compliance with E1/T1 interface jitter and wander requirements.

FibeAir 4800 enables direct connection of existing equipment, such as LANs and PBX systems, thus eliminating the need for additional external equipment.

FibeAir 4800 product family is a split-mount system consisting of an IDU, ODU and antenna on each side of the link. Two types of IDUs are available: IDU-E with 1 or 2 x 10/100BT and 1 or 2 x E1/T1, or IDU-C with 2 x 10/100BT and 4 x E1/T1 and optional power redundancy.

Two types of ODUs are available: ODU with integrated 1ft antenna, or ODU with N-type connector for external antenna. An

all indoor unit with N-type connector for external antenna is also available.

Ceragon's FA4800 solutions can also be installed in a unique multi point-to-point architecture; multiple units are deployed in one hub site location, from where they provide a dedicated high capacity connection to each remote site. The MPTP concept builds on Ceragon's unique Hub Site Synchronization (HSS) feature, which synchronizes the transmission of collocated FA4800 radios thus dramatically reducing mutual interference commonly experienced with collocated TDD radios.

FOR PRICING CONTACT:
MapleNet
WIRELESS

877-MAPLE-01
sales@maplenetwireless.com
www.maplenetwireless.com

 CERAGON

"Best Value Added Reseller"
2007 & 2008 Award Winner

Applications

Wireless ISP Backhaul

Wireless Internet Service Provider (WISPs) use backhaul to connect their Point of Presence (POP) to their network operation centers. Using FibeAir 4800, WISPs have a higher capacity, with a range of up to 80 km, and bundled connectivity, within the same cost effective package.

Wi-Fi and WiMAX Backhauling

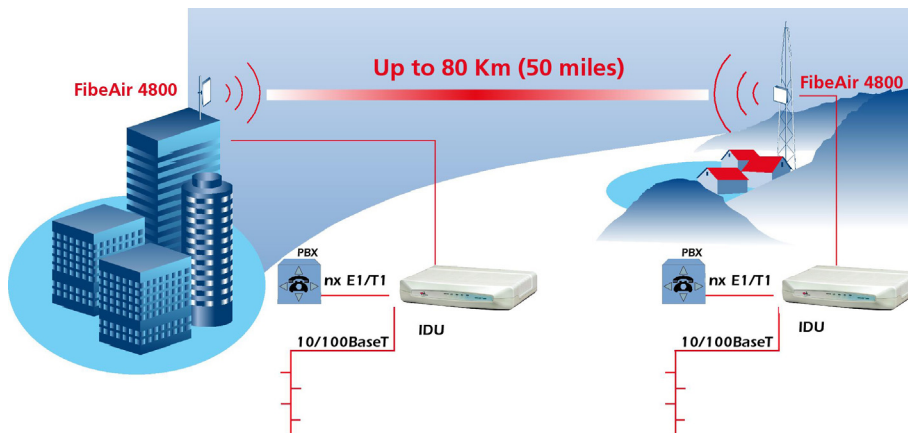
Provides a robust and cost-effective wireless alternative to leased lines, for the last mile connection between the Wi-Fi / WiMAX access point and the data network. Cellular backhauling: Offers E1/T1 standard legacy connectivity and seamless migration to ethernet connectivity for NGN.

Cellular backhauling

Offers E1/T1 standard legacy connectivity and seamless migration to ethernet connectivity for NGN.

Private Networks

Transparent connection of enterprise LAN and PBX systems which reduces communication costs, operating expenses and maintenance requirements.



Key Features

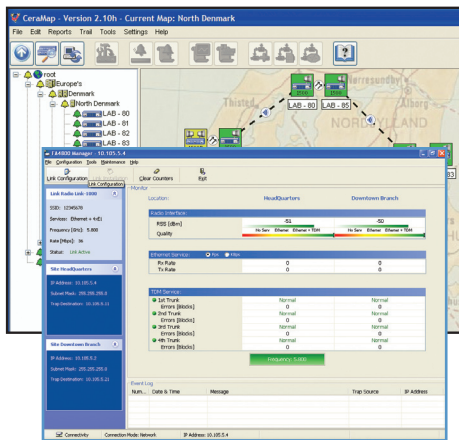
- High data rate up to 48 Mbps
- Cost-effective Ethernet and n*E1/T1 transmission link
- Wide radio bands offering 2.3GHz – 6GHz bands
- 5 GHz, 10 GHz and 20 GHz channel BW support
- Adaptive modulation (automatic rate selection)
- Complies with ETSI, FCC, IC, ITU-T and IEEE standards and frequency plans, for operation worldwide
- AES 128 Encryption
- Complete SNMP-based local and remote management –
- Managed by PolyView NMS
- Configurable modulation schemes
- BPSK, QPSK, 16 QAM, 64 QAM

FOR PRICING CONTACT:
MapleNet
WIRELESS
877-MAPLE-01
sales@maplenetwireless.com
www.maplenetwireless.com

 CERAGON
"Best Value Added Reseller"
2007 & 2008 Award Winner

End-to-End Network Management

Ceragon provides state-of-the-art management based on SNMP. Our management applications enable management functions at both the element and network levels. FibeAir 4800 link manager runs on Windows 2000/2003/XP and enables operators to perform link configuration, RF, PDH and Ethernet performance monitoring, diagnostics, alarm reports and more.



FibeAir 4800 link manager integrates with Network Management System platforms, such as Ceragon's NMS, SNMPc, or HPOV, to provide more comprehensive system management.

PolyView™ is Ceragon's NMS server that includes CeraMap™, its friendly and powerful client graphical interface. PolyView can be used to update and monitor network topology status, define and configure elements in the network.

In addition, it can integrate with Northbound NMS platforms, to provide enhanced network management. PolyView and CeraMap support Windows and Unix platforms.

Ceragon Networks Ltd.

Ceragon Networks Ltd. is a leading provider of high-capacity Carrier Ethernet and TDM wireless solutions for cellular and fixed wireless operators, enterprises and government organizations.

Ceragon's modular FibeAir product family is recognized as the gold standard for backhaul transmission and is the selection of choice for service providers. A scalable, future-proof solution for wireless transport of broadband services, FibeAir operates across multiple frequencies for Ethernet and SONET/SDH protocols, supporting

the emerging needs of next-generation networks that are evolving to all-IP based services. It leads the market in IP backhaul, offering a unique, native Ethernet solution that provides efficient, robust connectivity.

Ceragon supports its growing base of more than 200 customers in 85 countries by operating an extensive sales network comprised of multiple offices and numerous partners located around the world.

The Ceragon logo and FibeAir® are registered trademarks of Ceragon Networks Ltd. This brochure is being provided for informational purposes only. The details contained in this document, including product and feature specifications, are subject to change without notice. This brochure shall not bind Ceragon to provide to anyone a specific product or set of features related thereto.

FOR PRICING CONTACT:
MapleNet
WIRELESS

877-MAPLE-01
sales@maplenetwireless.com
www.maplenetwireless.com

 **CERAGON**

"Best Value Added Reseller"
2007 & 2008 Award Winner

Ceragon Networks

Corporate Headquarters

Ceragon Networks Ltd.
Tel Aviv, Israel
Tel: +972-3-645-5733
Fax: +972-3-645-5499

EMEA

Ceragon Networks
(UK) Limited
Redditch, UK
Tel: +44-(0)-1527-591900
Fax: +44-(0)-1527-591903

Asia Pacific

Ceragon Networks APAC
(S'pore) Ltd.
Singapore
Tel: +65-6339-3110
Fax: +65-6339-1310

North America

Ceragon Networks, Inc.
New Jersey, USA
Tel: +1-201-845-6955
Fax: +1-201-845-5665
Toll free: 1-877-FIBEAIR

Latin America

Ceragon Networks,
S.A. de C.V.
Mexico D.F, Mexico
Tel: +52-55-5663-2914
Fax: +52-55-5663-2841